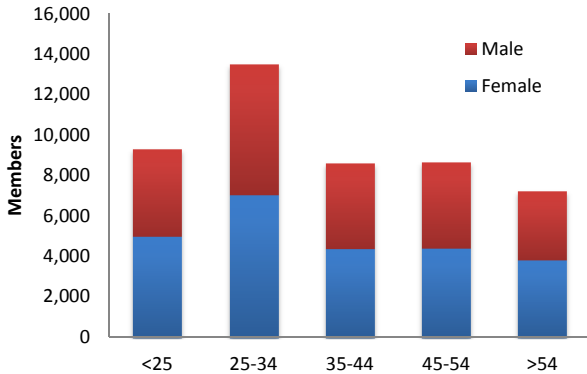


# NH Health Protection Program Demographic Profile, 1/1/16

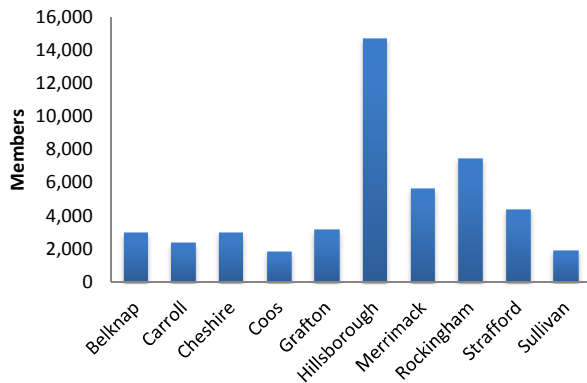
Data Source: 1/4/16 extract from MMIS

### Enrollment by Age Group and Gender



Members Age Group	Gender Female	Male	Total	Age Percent
<25	4,983	4,282	9,265	20%
25-34	7,051	6,447	13,498	29%
35-44	4,368	4,189	8,557	18%
45-54	4,408	4,229	8,637	18%
>54	3,795	3,389	7,184	15%
<b>Total</b>	<b>24,605</b>	<b>22,536</b>	<b>47,141</b>	
<b>Gender Percent</b>	<b>52%</b>	<b>48%</b>		

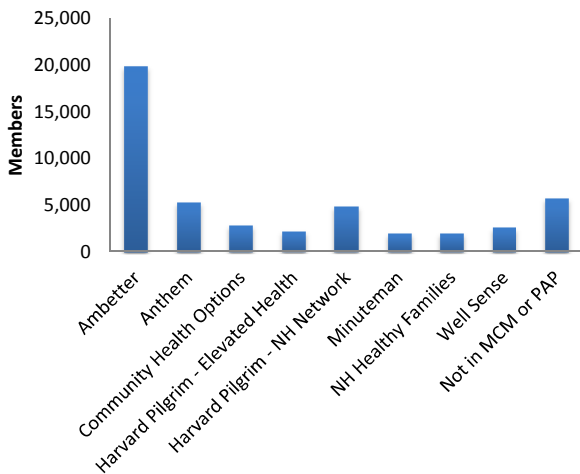
### Enrollment by County



County	Members	Percent
Belknap	2,935	6%
Carroll	2,300	5%
Cheshire	2,947	6%
Coos	1,796	4%
Grafton	3,149	7%
Hillsborough	14,679	31%
Merrimack	5,616	12%
Rockingham	7,460	16%
Strafford	4,379	9%
Sullivan	1,871	4%
<b>Total*</b>	<b>47,132</b>	

\*Excludes members with unknown county

### Enrollment by Health Plan



Health Plan	Members	Percent
Ambetter	19,902	42.2%
Anthem	5,265	11.2%
Community Health Options	2,817	6.0%
Harvard Pilgrim - Elevated Health	2,130	4.5%
Harvard Pilgrim - NH Network	4,793	10.2%
Minuteman	1,973	4.2%
NH Healthy Families	1,980	4.2%
Well Sense	2,590	5.5%
Not in MCM or PAP	5,691	12.1%
<b>Total</b>	<b>47,141</b>	<b>100.0%</b>

Note: Members not yet in a plan are in their initial plan selection window, waiting until the first of the month to join a plan, or are in the Health Insurance Premium Payment part of NHHPP. Member in Medicaid MCOs are either medically frail or are in their PAP plan selection window after having migrated from a standard Medicaid category to NHHPP